

SIRUBA®

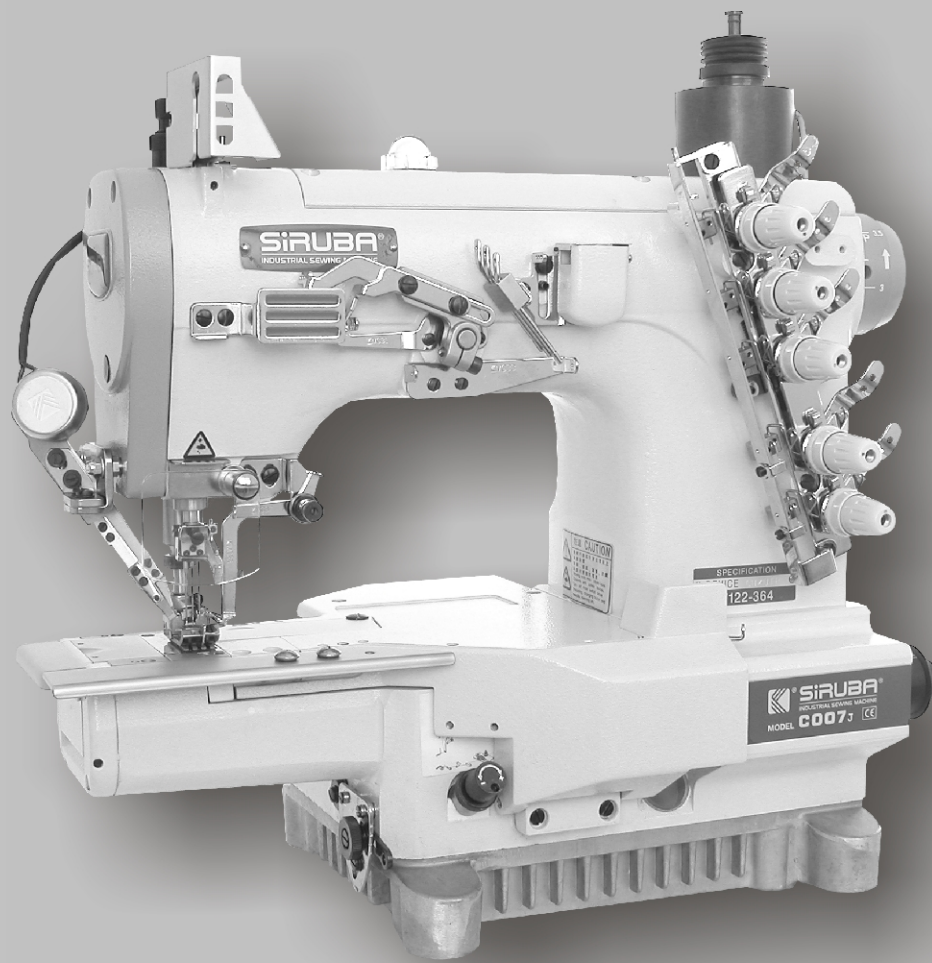
銀箭牌工業用縫紉機

INDUSTRIAL SEWING MACHINE

C007J/C007JD

C858J/C858JD

零件圖 PARTS LIST



CE

 高林股份有限公司
KAULIN MFG. CO., LTD.

筒車規格件表 / CONVERSION CHART

MODEL 機型	SUB-CLASS 規格	NEEDLE CLAMP 針座	NEEDLE PLATE 針板	MAIN FEED DOG 主送具	DIFF FEED DOG 差送具	PRESSER FOOT 押具	SPREADER 上叉	LOOPER 勾針	NEEDLE 針號
C007J-W121 C858J /CH	356 364	M5356 M5364	E3816P E3817P	D4206 D4207	H4458 H4459	P2446-A P2447-A	MH41	MT01	UYX128GAS #10
C007J-U121 C858J /CH	356 364	M5356 M5364	E3816P E3817P	D4206 D4207	H4458 H4459	P2446-A P2447-A	—	MT01	UYX128GAS #10
C007J-W121 C858J-CH/UTP(UTR)	356 364	M5356 M5364	E3816P E3817P	D4206 D4207	H4458 H4459	P2446-A P2447-A	MH41	MT01	UYX128GAS #10
C007J-U121 C858J-CH/UTQ(UTS)	356 364	M5356 M5364	E3816P E3817P	D4206 D4207	H4458 H4459	P2446-A P2447-A	—	MT01	UYX128GAS #10
C007J-W122 C858J /CH	240 248 256 356 364	M5240 M5248 M5356 M5356 M5364	E3524P E3525P E3826S E3826P E3827P	D4206 D4206 D4206 D4206 D4207	H4458 H4458 H4458 H4458 H4459	P2544-A P2545-A P2446-A P2446-A P2447-A	MH41	MT01	UYX128GAS #10
C007J-U122 C858J /CH	240 248 256 356 364	M5240 M5248 M5356 M5356 M5364	E3524P E3525P E3826S E3826P E3827P	D4206 D4206 D4206 D4206 D4207	H4458 H4458 H4458 H4458 H4459	P2544-A P2545-A P2446-A P2446-A P2447-A	—	MT01	UYX128GAS #10
C007J-W122 C858J-CH/UTP(UTR)	240 248 256 356 364	M5240 M5248 M5356 M5356 M5364	E3524P E3525P E3826S E3826P E3827P	D4206 D4206 D4206 D4206 D4207	H4458 H4458 H4458 H4458 H4459	P2544-A P2545-A P2446-A P2446-A P2447-A	MH41	MT01	UYX128GAS #10

註：P2544-A/P2545-A為固定式押具舌，亦可使用活動式押具舌 P2565-A代替 P2544-A/P2545-A
 P2446-A/P2447-A為固定式押具舌，亦可使用活動式押具舌 P2466-A代替 P2446-A/P2447-A

規格件表 CONVERSION CHART

規格件表 CONVERSION CHART

筒車規格件表 / CONVERSION CHART

MODEL	SUB-CLASS	NEEDLE CLAMP	NEEDLE PLATE	MAIN FEED DOG	DIFF. FEED DOG	PRESSER FOOT	SPREADER	LOOPER	NEEDLE
機型	規格	針座	針板	主送具	差送具	押具	上叉	勾針	針號
C007J-U122 C858J /CH/UTQ(UTS)	240 248 256 356 364	M5240 M5248 M5356 M5356 M5364	E3524P E3525P E3826S E3826P E3827P	D4206 D4206 D4206 D4206 D4207	H4458 H4458 H4458 H4458 H4459	P2544-A P2545-A P2446-A P2446-A P2447-A	—	MT01	UYX128GAS #10
C007J-W122 C858J /CHA	356	M5356	E3826Q	D4206	H4458	P0216-A	MH41	MT01	UYX128GAS #10
C007J-U122 C858J /CHA	356	M5356	E3826Q	D4206	H4458	P0416-A	—	MT01	UYX128GAS #10
C007J-W123 C858J /CH	240 248 356 364	M5240 M5248 M5356 M5364	E3534P E3535P E3836P E3837P	D4206 D4206 D4206 D4207	H4458 H4458 H4458 H4459	P2544-A P2545-A P2446-A P2447-A	MH41	MT01	UYX128GAS #10
C007J-U123 C858J /CH	240 248 356 364	M5240 M5248 M5356 M5364	E3534P E3535P E3836P E3837P	D4206 D4206 D4206 D4207	H4458 H4458 H4458 H4459	P2544-A P2545-A P2446-A P2447-A	—	MT01	UYX128GAS #10
C007J-W132 C858J /CHE	240 248 356 364	M5240 M5248 M5356 M5364	E2324P E2325P E2326P E2327P	D2109 D2109 D2110 D2110	H2219 H2219 H2220 H2220	P2904-A P2905-A P2906-A P2907-A	MH41	MT01	UYX128GAS #10
C007J-W132 C858J /CHE/UTP(UTR)	356 364	M5356 M5364	E2326P E2327P	D2110	H2220	P2906-A P2907-A	MH41	MT01	UYX128GAS #10

註：P2544-A/P2545-A 為固定式押具舌，亦可使用活動式押具舌 P2565-A代替 P2544-A/P2545-A
P2446-A/P2447-A 為固定式押具舌，亦可使用活動式押具舌 P2466-A代替 P2446-A/P2447-A

筒車規格件表 / CONVERSION CHART

MODEL	SUB-CLASS	NEEDLE CLAMP	NEEDLE PLATE	MAIN FEED DOG	DIFF. FEED DOG	PRESSER FOOT	SPREADER	LOOPER	NEEDLE
機型	規格	針座	針板	主送具	差送具	押具	上叉	勾針	針號
C007J-W152 C858J-CZ/UTP/RLQ	356 364	M5356 M5364	E4326P E4327P	D3216 D3217	H3262 H3263	P2416-A P2417-A	MH41	MT01	UYX128GAS #10
C007J-U152 C858J-CZ/UTQ/RLQ	356 364	M5356 M5364	E4326P E4327P	D3216 D3217	H3262 H3263	P2416-A P2417-A	—	MT01	UYX128GAS #10
C007J-W152 C858J-CZ/CLA/UTP/RLQ	356 364	M5356 M5364	E4326P E4327P	D3216 D3217	H3262 H3263	P2416-A P2417-A	MH41	MT01	UYX128GAS #10
C007J-U152 C858J-CZ/CLA/UTQ/RLQ	356 364	M5356 M5364	E4326P E4327P	D3216 D3217	H3262 H3263	P2416-A P2417-A	—	MT01	UYX128GAS #10
C007J-W162 C858J	240 248 356 364	M5240 M5248 M5356 M5364	E3544 E3545 E3846 E3847	D4206 D4206 D4206 D4207	H4458 H4458 H4458 H4459	P2544-A P2545-A P2446-A P2447-A	MH41	MT01A	TVX5 #14~16
C007J-U162 C858J	240 248 356 364	M5240 M5248 M5356 M5364	E3544 E3545 E3846 E3847	D4206 D4206 D4206 D4207	H4458 H4458 H4458 H4459	P2544-A P2545-A P2446-A P2447-A	—	MT01A	TVX5 #14~16
C007J-W162 C858J/UTP (UTR)	248 356 364	M5240 M5248 M5356 M5364	E3544 E3545 E3846 E3847	D4206 D4206 D4206 D4207	H4458 H4458 H4458 H4459	P2544-A P2545-A P2446-A P2447-A	MH41	MT01A	TVX5 #14~16
C007J-U162 C858J/UTQ (UTS)	240 248 356 364	M5240 M5248 M5356 M5364	E3544 E3545 E3846 E3847	D4206 D4206 D4206 D4207	H4458 H4458 H4458 H4459	P2544-A P2545-A P2446-A P2447-A	—	MT01A	TVX5 #14~16

註：P2544-A/P2545-A為固定式押具舌，亦可使用活動式押具舌 P2565-A代替P2544-A/P2545-A
P2446-A/P2447-A為固定式押具舌，亦可使用活動式押具舌 P2466-A代替P2446-A/P2447-A

規格件表 CONVERSION CHART

規格件表 CONVERSION CHART

簡單規格件表 / CONVERSION CHART

MODEL	SUB-CLASS	NEEDLE CLAMP	NEEDLE PLATE	MAIN FEED DOG	DIFF. FEED DOG	PRESSER FOOT	SPREADER	LOOPER	NEEDLE
機型	規格	針座	針板	主送具	差送具	押具	上叉	勾針	針號
C007J-W222 C858J /CQ	240 248 356 364	M5240 M5248 M5356 M5364	E4124P E4125P E4426P E4427P	D3216 D3216 D3216 D3217	H3362 H3362 H3362 H3363	P1814-A P1815-A P2116-A P2117-A	MH41 —	MT01	UYX128GAS #10
C007J-W222 C858J /CQA/CLA	256	M5356	E2326Q	D2110	H2220Q	P2906Q-A	MH41	MT01A	TVX5 #14
C007J-W322 C858J /CC	356 364	M5356 M5364	E2826P E2827P	D2107L D2107L	H3259M H3259M	P2456-A P2457-A	MH41	MT01	UYX128GAS #10
C007J-U322 C858J /CC	356 364	M5356 M5364	E2826P E2827P	D2107L D2107L	H3259M H3259M	P2456-A P2457-A	—	MT01	UYX128GAS #10
C007J-W322 C858J /CC/UTP(UTR)	356 364	M5356 M5364	E2826P E2827P	D2107L D2107L	H3259M H3259M	P2456-A P2457-A	MH41	MT01	UYX128GAS #10
C007J-U322 C858J /CC/UTQ(UTS)	356 364	M5356 M5364	E2826P E2827P	D2107L D2107L	H3259M H3259M	P2456-A P2457-A	—	MT01	UYX128GAS #10

註(1) : P2544-A/P2545-A為固定式押具舌,亦可使用活動式押具舌 P2565-A代替 P2544-A/P2545-A
P2446-A/P2447-A為固定式押具舌,亦可使用活動式押具舌 P2466-A代替 P2446-A/P2447-A

註(2) : C007J-W/U322A-364 /CC 時, 該針板與送金改用 C007J-W/U122-356 之針板與送金, 加附CHJ-A
C858J

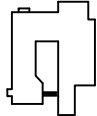



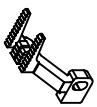





筒車規格件表/CONVERSION CHART

MODEL 機 型	SUB-CLASS 規 格	NEEDLE CLAMP 針 座	NEEDLE PLATE 針 板	MAIN FEED DOG 主 送 具	DIFF. FEED DOG 差 送 具	PRESSER FOOT 押 具	SPREADER 上 叉	LOOPER 勾 針	NEEDLE 針 號
C007J-W322 C858J /CE	356 364	M5356 M5364	E2626P E2627P	D2107	H3159	P2456-A P2457-A	MH41	MT01	UYX128GAS #10
C007J-U322 C858J /CE	356 364	M5356 M5364	E2626P E2627P	D2107	H3159	P2456-A P2457-A	—	MT01	UYX128GAS #10
C007J-W322 C858J CE/UTP(UTR)	356 364	M5356 M5364	E2626P E2627P	D2107	H3159	P2456-A P2457-A	MH41	MT01	UYX128GAS #10
C007J-U322 C858J CE/UTQ(UTS)	356 364	M5356 M5364	E2626P E2627P	D2107	H3159	P2456-A P2457-A	—	MT01	UYX128GAS #10

註：P2544-A/P2545-A為固定式押具舌,亦可使用活動式押具舌 P2565-A代替P2544-A/P2545-A
 P2446-A/P2447-A為固定式押具舌,亦可使用活動式押具舌 P2466-A代替P2446-A/P2447-A

規格件表 CONVERSION CHART

筒車規格件表 / CONVERSION CHART

									
MODEL	SUB-CLASS	NEEDLE CLAMP	NEEDLE PLATE	MAIN FEED DOG	DIFF. FEED DOG	PRESSER FOOT	SPREADER	LOOPER	NEEDLE
機型	規格	針座	針板	主送具	差送具	押具	上叉	勾針	針號
C007J-W512 C858J /FE(FFC)	232 240 356 364	M5232 M5240 M5356 M5364	E3523R E3524R E3826R E3827R	D4205 D4206 D4206 D4207	H4457 H4458 H4458 H4459	P2913-A P2914-A P3216-A P3217-A	MH41	MT01	UYX128GAS #10
C007J-U512 C858J /FE(FFC)	240 356 364	M5240 M5356 M5364	E3524R E3826R E3827R	D4206 D4206 D4207	H4458 H4458 H4459	P3414-A P3716-A P3717-A	—	MT01	UYX128GAS #10
C007J-W522 C858J /FE(FFC)/CR/CL	356 364	M5356 M5364	E6426R E6427R	D3222	H3268	P3816R-A P3817R-A	MH41	MT01	UYX128GAS #10
C007J-U522 C858J /FE(FFC)/CR/CL	356 364	M5356 M5364	E6426R E6427R	D3222	H3268	P3816R-A P3817R-A	—	MT01	UYX128GAS #10
C007J-W532/ C858J /CR/UTP/CL/RLP/CX	232 356 364	M5232 M5356 M5364	E6423R E6426R E6427R	D3219 D3222	H3265 H3268	P3813R-A P3816R-A P3817R-A	MH41	MT01	UYX128GAS #10
C007J-U532/ C858J /CR/UTQ/CL/RLP/CX	356 364	M5356 M5364	E6426R E6427R	D3222	H3268	P3816R-A P3817R-A	MH41	MT01	UYX128GAS #10
C007J-W922/ C858J CW	456 464	M5456 M5464	E1828P E1848P	D2107M	H4459M	P2428Q-A P2448Q-A	MH41	MT01B	SMX1014B#10 (MY1014B#70,S,Y7256)
C007J-W922/ C858J CW/UTP	456 464	M5456 M5464	E1828P E1848P	D2107M	H4459M	P2428Q-A P2448Q-A	MH41	MT01B	SMX1014B#10 (MY1014B#70,S,Y7256)
C007J-W922/ C858J CW/UTR	456 464	M5456 M5464	E1828P E1848P	D2107M	H4459M	P2428Q-A P2448Q-A	MH41	MT01B	SMX1014B#10 (MY1014B#70,S,Y7256)

筒車規格件表 / CONVERSION CHART

MODEL	SUB-CLASS	NEEDLE CLAMP	NEEDLE PLATE	MAIN FEED DOG	DIFF. FEED DOG	PRESSER FOOT	SPREADER	LOOPER	NEEDLE
機型	規格	針座	針板	主送具	差送具	押具	上叉	勾針	針號
C007J-W811 C858J /CRL/RL	248 356 364	M5248 M5356 M5364	E0215R E0216R E0217R	D2101Q	H2203R	P2765-A P2766-A P2767-A	MH41	MT01	TX5 #14
C007J-W811A C858J /CRL/RL	248 356 364	M5248 M5356 M5364	E0215Q E0216Q E0217Q	D2101Q	H2203Q	P2765-A P2766-A P2767-A	MH41	MT01	TX5 #14
C007J-U811 C858J /CRL/RL	248 356 364	M5248 M5356 M5364	E0215R E0216R E0217R	D2101Q	H2203R	P0965-A P0966-A P0967-A	—	MT01	TX5 #14
C007J-U811A C858J /CRL/RL	248 356 364	M5248 M5356 M5364	E0215Q E0216Q E0217Q	D2101Q	H2203Q	P0965-A P0966-A P0967-A	—	MT01	TX5 #14
C007J-W811 C858J CRL/UTP/RL	248 356 364	M5248 M5356 M5364	E0215R E0216R E0217R	D2101Q	H2203R	P2765-A P2766-A P2767-A	MH41	MT01	TX5 #14
C007J-W811A C858J CRL/UTP/RL	248 356 364	M5248 M5356 M5364	E0215Q E0216Q E0217Q	D2101Q	H2203Q	P2765-A P2766-A P2767-A	MH41	MT01	TX5 #14
C007J-U811 C858J CRL/UTQ/RL	248 356 364	M5248 M5356 M5364	E0215R E0216R E0217R	D2101Q	H2203R	P0965-A P0966-A P0967-A	—	MT01	TX5 #14
C007J-U811A C858J CRL/UTQ/RL	248 356 364	M5248 M5356 M5364	E0215Q E0216Q E0217Q	D2101Q	H2203Q	P0965-A P0966-A P0967-A	—	MT01	TX5 #14
C007J-W812 C858J /CRL/RL	232 248 356 364	M5232 M5248 M5356 M5364	E0223R E0225R E0226R E0227R	D2101Q	H2203R	P2763-A P2765-A P2766-A P2767-A	MH41	MT01	UYX128GAS #10
C007J-W812A C858J /CRL/RL	248 356 364	M5248 M5356 M5364	E0225Q E0226Q E0227Q	D2101Q	H2203Q	P2765-A P2766-A P2767-A	MH41	MT01	UYX128GAS #10
C007J-U812 C858J /CRL/RL	248 356 364	M5248 M5356 M5364	E0225R E0226R E0227R	D2101Q	H2203R	P0965-A P0966-A P0967-A	—	MT01	UYX128GAS #10
C007J-U812A C858J /CRL/RL	248 356 364	M5248 M5356 M5364	E0225Q E0226Q E0227Q	D2101Q	H2203Q	P0965-A P0966-A P0967-A	—	MT01	UYX128GAS #10

註：C007J-W812A/W813A 機型之針板與差送具為 5 排齒。
C858J
C007J-W812/W813 機型之針板與差送具為 4 排齒。
C858J

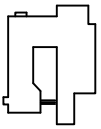


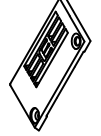
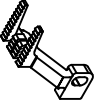





規格件表 CONVERSION CHART

筒車規格件表 / CONVERSION CHART

MODEL	SUB-CLASS	NEEDLE CLAMP	NEEDLE PLATE	MAIN FEED DOG	DIFF. FEED DOG	PRESSER FOOT	SPREADER	LOOPER	NEEDLE
機型	規格	針座	針板	主送具	差送具	押具	上叉	勾針	針號
C007J-W812	248	M5248	E0225R	D2101Q	H2203R	P2765-A	MH41	MT01	UYX128GAS #10
C858J-CRL/UTP/RL	356 364	M5356 M5364	E0226R E0227R	D2101Q	H2203Q	P2766-A P2767-A	MH41	MT01	UYX128GAS #10
C007J-W812A	248	M5248	E0225Q	D2101Q	H2203Q	P2765-A	MH41	MT01	UYX128GAS #10
C858J-CRL/UTP/RL	356 364	M5356 M5364	E0226Q E0227Q	D2101Q	H2203R	P2766-A P0965-A P0966-A P0967-A	—	MT01	UYX128GAS #10
C007J-W812A	248	M5248	E0225Q	D2101Q	H2203Q	P2765-A	—	MT01	UYX128GAS #10
C858J-CRL/UTR	356 364	M5356 M5364	E0226Q E0227Q	D2101Q	H2203R	P0966-A P0967-A	—	MT01	UYX128GAS #10
C007J-W812A	248	M5248	E0225Q	D2101Q	H2203Q	P2765-A	MH41	MT01	UYX128GAS #10
C858J-CRL/UTS	356 364	M5356 M5364	E0226Q E0227Q	D2101Q	H2203R	P2766-A P2767-A	MH41	MT01	UYX128GAS #10
C007J-W812A	248	M5248	E0225Q	D2101Q	H2203Q	P2765-A	MH41	MT01	UYX128GAS #10
C858J-CRL/UTS	356 364	M5356 M5364	E0226Q E0227Q	D2101Q	H2203R	P2766-A P0965-A P0966-A P0967-A	MH41	MT01	UYX128GAS #10
C007J-W813	248	M5248	E0235R	D2101Q	H2203R	P2765-A	MH41	MT01	UYX128GAS #10
C858J-CRL/RL	356 364	M5356 M5364	E0236R E0237R	D2101Q	H2203Q	P0965-A P0966-A P0967-A	MH41	MT01	UYX128GAS #10
C007J-W813A	248	M5248	E0235Q	D2101Q	H2203R	P2765-A	MH41	MT01	UYX128GAS #10
C858J-CRL/RL	356 364	M5356 M5364	E0236Q E0237Q	D2101Q	H2203Q	P2766-A P2767-A	MH41	MT01	UYX128GAS #10
C007J-W813A	248	M5248	E0235Q	D2101Q	H2203Q	P2765-A	—	MT01	UYX128GAS #10
C858J-CRL/RL	356 364	M5356 M5364	E0236Q E0237Q	D2101Q	H2203R	P0965-A P0966-A P0967-A	—	MT01	UYX128GAS #10
C007J-W813A	248	M5248	E0235Q	D2101Q	H2203Q	P2765-A	—	MT01	UYX128GAS #10
C858J-CRL/RL	356 364	M5356 M5364	E0236Q E0237Q	D2101Q	H2203R	P0966-A P0967-A	—	MT01	UYX128GAS #10

註：C007J-W812A/W813A 機型之針板與差送具為 5 排齒，
C858J 機型之針板與差送具為 4 排齒，
C007J-W812/W813 機型之針板與差送具為 4 排齒，
C858J

筒車規格件表 / CONVERSION CHART

									
MODEL	SUB-CLASS	NEEDLE CLAMP	NEEDLE PLATE	MAIN FEED DOG	DIFF. FEED DOG	PRESSER FOOT	SPREADER	LOOPER	NEEDLE
機型	規格	針座	針板	主送具	差送具	押具	上叉	勾針	針號
C007J-W813 C858J- /CRL/UTR	248 356 364	M5248 M5356 M5364	E0235R E0236R E0237R	D2101Q	H2203R	P2765-A P2766-A P2767-A	MH41	MT01	TVX5 #14
C007J-W813A C858J- /CRL/UTR	248 356 364	M5248 M5356 M5364	E0235Q E0236Q E0237Q	D2101Q	H2203Q	P2765-A P2766-A P2767-A	MH41	MT01	TVX5 #14
C007J-U813 C858J- /CRL/UTS	248 356 364	M5248 M5356 M5364	E0235R E0236R E0237R	D2101Q	H2203R	P0965-A P0966-A P0967-A	MH41	MT01	TVX5 #14
C007J-U813A C858J- /CRL/UTS	248 356 364	M5248 M5356 M5364	E0235Q E0236Q E0237Q	D2101Q	H2203Q	P0965-A P0966-A P0967-A	MH41	MT01	TVX5 #14
C007J-W822 C858J- /CRL/CY/CL/RL	248 356 364	M5248 M5356 M5364	E0225R E0226R E0227R	D2101Q	H2203R	P2765-A P2766-A P2767-A	MH41	MT01	UYX128GAS #10
C007J-W823 C858J- /CRL/CY/CL/RL	248 356 364	M5248 M5356 M5364	E0235R E0236R E0237R	D2101Q	H2203R	P2765-A P2766-A P2767-A	MH41	MT01	TVX5 #14
C007J-U822 C858J- /CRL/CY/CL/RL	248 356 364	M5248 M5356 M5364	E0225R E0226R E0227R	D2101Q	H2203R	P0965-A P0966-A P0967-A	—	MT01	UYX128GAS #10
C007J-U823 C858J- /CRL/CY/CL/RL	248 356 364	M5248 M5356 M5364	E0235R E0236R E0237R	D2101Q	H2203R	P0965-A P0966-A P0967-A	—	MT01	TVX5 #14
C007J-W822 C858J- CRL/CY/UTP/CL/RL	248 356 364	M5248 M5356 M5364	E0225R E0226R E0227R	D2101Q	H2203R	P2765-A P2766-A P2767-A	MH41	MT01	UYX128GAS #10
C007J-W823 C858J- CRL/CY/UTP/CL/RL	248 356 364	M5248 M5356 M5364	E0235R E0236R E0237R	D2101Q	H2203R	P2765-A P2766-A P2767-A	MH41	MT01	TVX5 #14

註：C007J-W812A/W813A 機型之針板與差送具為 5 排齒。
 C858J- 機型之針板與差送具為 4 排齒。
 C007J-W812/W813 機型之針板與差送具為 4 排齒。
 C858J-

規格件表 CONVERSION CHART

規格件表 CONVERSION CHART

筒車規格件表 / CONVERSION CHART

MODEL 機 型	SUB-CLASS 規 格	NEEDLE CLAMP 針 座	NEEDLE PLATE 針 板	MAIN FEED DOG 主 送 具	DIFF. FEED DOG 差 送 具	PRESSER FOOT 押 具	SPREADER 上 叉	LOOPER 勾 針	NEEDLE 針 號
C007J-U822 C858J CRL/CY/UTQ/CL/RL	248 356 364	M5248 M5356 M5364	E0225R E0226R E0227R	D2101Q	H2203R	P0965-A P0966-A P0967-A	—	MT01	UYX128GAS #10
C007J-U823 C858J CRL/CY/UTQ/CL/RL	248 356 364	M5248 M5356 M5364	E0235R E0236R E0237R	D2101Q	H2203R	P0965-A P0966-A P0967-A	—	MT01	TX5 #14
C007J-U822 C858J CRL/CY/UTQ/CL/RL	248 356 364	M5248 M5356 M5364	E0225R E0226R E0227R	D2101Q	H2203R	P0965-A P0966-A P0967-A	—	MT01	UYX128GAS #10
C007J-U823 C858J CRL/CY/UTQ/CL/RL	248 356 364	M5248 M5356 M5364	E0235R E0236R E0237R	D2101Q	H2203R	P0965-A P0966-A P0967-A	—	MT01	TX5 #14

筒車規格件表 / CONVERSION CHART

GAGE15

MODEL	SUB-CLASS	NEEDLE CLAMP	NEEDLE PLATE	MAIN FEED DOG	DIFF. FEED DOG	PRESSER FOOT	SPREADER	LOOPER	CAM	NEEDLE
機型	規格	針座	針板	主送具	差送具	押具	上叉	勾針	偏心凸輪	針號
C007J-W522 C858J-U522 /FE(FFC)/CRA/CL	356 364	M5356 M5364	E 6426P E 6427P	D 3222	H 3268	P3116 P3117	MH41E	MT01	MF01-A	UYX128GAS #11
C007J-U522 C858J-CRA/CL	356 364	M5356 M5364	E 6426P E 6427P	D 3222	H 3268	P3116 P3117	—	MT01	MF01-A	UYX128GAS #11
C007J-W522 C858J-CRA/CL	356 364	M5356 M5364	E 6426P E 6427P	D 3222	H 3268	P3116 P3117	MH41E	MT01	MF01-A	UYX128GAS #11
C007J-U522 C858J-CRA/CL	356 364	M5356 M5364	E 6426P E 6427P	D 3222	H 3268	P3116 P3117	—	MT01	MF01-A	UYX128GAS #11
C007J-W532/ C858J-CRA/UTP/CL/RLP/CX-A	356 364	M5356 M5364	E 6426P E 6427P	D 3222	H 3268	P3816Q P3817Q	MH41E	MT01	MF01-A	UYX128GAS #11
C007J-U532/ C858J-CRA/UTQ/CL/RLP/CX-A	356 364	M5356 M5364	E 6426P E 6427P	D 3222	H 3268	P3816Q P3817Q	—	MT01	MF01-A	UYX128GAS #11
C007J-W532/ C858J-CRA/UTP/CL/RLP/CX-B	356 364	M5356 M5364	E 6426P E 6427P	D 3222	H 3268	P3816Q P3817Q	MH41E	MT01	MF01-A	UYX128GAS #11
C007J-U532/ C858J-CRA/UTQ/CL/RLP/CX-B	356 364	M5356 M5364	E 6426P E 6427P	D 3222	H 3268	P3816Q P3817Q	MH41E	MT01	MF01-A	UYX128GAS #11

規格件表 CONVERSION CHART

筒車直驅伺服馬達規格件表 / CONVERSION CHART

MODEL	SUB-CLASS	NEEDLE CLAMP	NEEDLE PLATE	MAIN FEED DOG	DIFF. FEED DOG	PRESSER FOOT	SPREADER	LOOPER	NEEDLE	Motor
機型	規格	針座	針板	主送具	差送具	押具	上叉	勾針	針號	馬達
C007JD-W121 C858JD /CH	356	M5356	E3816P	D4206	H4458	P2446-A	MH41	MT01	UYX128GAS #10	T50IHE
	364	M5364	E3817P	D4207	H4459	P2447-A	—	MT01		
C007JD-U121 C858JD /CH	356	M5356	E3816P	D4206	H4458	P2446-A	—	MT01	UYX128GAS #10	
	364	M5364	E3817P	D4207	H4459	P2447-A	MH41	MT01		
C007JD-W121 C858JD /CH/UTP(UTR)	356	M5356	E3816P	D4206	H4458	P2446-A	—	MT01	UYX128GAS #10	
	364	M5364	E3817P	D4207	H4459	P2447-A	—	MT01		
C007JD-U121 C858JD /CH/UTQ(UTS)	356	M5356	E3816P	D4206	H4458	P2446-A	—	MT01	UYX128GAS #10	
	364	M5364	E3817P	D4207	H4459	P2447-A	—	MT01		
C007JD-W122 C858JD /CH	240	M5240	E3524P	D4206	H4458	P2544-A	—	—	UYX128GAS #10	
	248	M5248	E3525P	D4206	H4458	P2545-A	—	—		
	256	M5356	E3826S	D4206	H4458	P2446-A	MH41	MT01		
	356	M5356	E3826P	D4206	H4458	P2446-A	—	—		
C007JD-U122 C858JD /CH	240	M5240	E3524P	D4206	H4458	P2544-A	—	—	UYX128GAS #10	
	248	M5248	E3525P	D4206	H4458	P2545-A	—	—		
	256	M5356	E3826S	D4206	H4458	P2446-A	MH41	MT01		
	356	M5356	E3826P	D4206	H4458	P2446-A	—	—		
C007JD-W122 C858JD /CH/UTP(UTR)	240	M5240	E3524P	D4206	H4458	P2544-A	—	—	UYX128GAS #10	
	248	M5248	E3525P	D4206	H4458	P2545-A	—	—		
	256	M5356	E3826S	D4206	H4458	P2446-A	MH41	MT01		
	356	M5356	E3826P	D4206	H4458	P2446-A	—	—		

註：P2544-A/P2545-A為固定式押具舌，亦可使用活動式押具舌 P2565-A 代替 P2544-A/P2545-A
 P2446-A/P2447-A為固定式押具舌，亦可使用活動式押具舌 P2466-A 代替 P2446-A/P2447-A

筒車直驅何服馬達規格件表 / CONVERSION CHART

MODEL	SUB-CLASS	NEEDLE CLAMP	NEEDLE PLATE	MAIN FEED DOG	DIFF. FEED DOG	PRESSER FOOT	SPREADER	LOOPER	NEEDLE	Motor
機型	規格	針座	針板	主送具	差送具	押具	上叉	勾針	針號	馬達
C007JD-U122	240	M5240	E3524P	D4206	H4458	P2544-A	—	—	UYX128GAS #10	馬達
C858JD-CH/UTQ(UTS)	248	M5248	E3525P	D4206	H4458	P2545-A	—	MT01	UYX128GAS #10	
	256	M5356	E3826S	D4206	H4458	P2446-A	—	—	UYX128GAS #10	
	356	M5356	E3826P	D4206	H4458	P2446-A	—	—	UYX128GAS #10	
	364	M5364	E3827P	D4207	H4459	P2447-A	—	—	UYX128GAS #10	
C007JD-W122	356	M5356	E3826Q	D4206	H4458	P0216-A	MH41	MT01	UYX128GAS #10	
C858JD-CHA										
C007JD-C858JD-U122	356	M5356	E3826Q	D4206	H4458	P0416-A	—	MT01	UYX128GAS #10	
	240	M5240	E3534P	D4206	H4458	P2544-A	—	—	UYX128GAS #10	
	248	M5248	E3535P	D4206	H4458	P2545-A	—	—	UYX128GAS #10	
	356	M5356	E3836P	D4206	H4458	P2446-A	MH41	MT01	UYX128GAS #10	
	364	M5364	E3837P	D4207	H4459	P2447-A	—	—	UYX128GAS #10	
C007JD-C858JD-U123	240	M5240	E3534P	D4206	H4458	P2544-A	—	—	UYX128GAS #10	
	248	M5248	E3535P	D4206	H4458	P2545-A	—	—	UYX128GAS #10	
	356	M5356	E3836P	D4206	H4458	P2446-A	—	—	UYX128GAS #10	
	364	M5364	E3837P	D4207	H4459	P2447-A	—	—	UYX128GAS #10	
C007JD-C858JD-U132	240	M5240	E2324P	D2109	H2219	P2904-A	—	—	UYX128GAS #10	
	248	M5248	E2325P	D2109	H2219	P2905-A	—	—	UYX128GAS #10	
	356	M5356	E2326P	D2110	H2220	P2906-A	MH41	MT01	UYX128GAS #10	
	364	M5364	E2327P	D2110	H2220	P2907-A	—	—	UYX128GAS #10	
C007JD-C858JD-CHE/UTP(UTR)	356	M5356	E2326P	D2110	H2220	P2906-A	MH41	MT01	UYX128GAS #10	
	364	M5364	E2327P	D2110	H2220	P2907-A	—	—	UYX128GAS #10	

註：P2544-A/P2545-A為固定式押具舌，亦可使用活動式押具舌 P2565-A代替P2544-A/P2545-A
 P2446-A/P2447-A為固定式押具舌，亦可使用活動式押具舌 P2466-A代替P2446-A/P2447-A

規格件表 CONVERSION CHART

筒車直驅伺服馬達規格件表 / CONVERSION CHART

MODEL	SUB-CLASS	NEEDLE CLAMP	NEEDLE PLATE	MAIN FEED DOG	DIFF. FEED DOG	PRESSER FOOT	SPREADER	LOOPER	NEEDLE	Motor
機型	規格	針座	針板	主送具	差送具	押具	上叉	勾針	針號	馬達
C007JD-W152 C858JD /CZP/RLQ	356	M5356	E4326	D3216	H3262	P2416-A	MH41	MT01	UYX128GAS #10	☐T501HE
	364	M5364	E4327	D3217	H3263	P2417-A	—	MT01	UYX128GAS #10	
C007JD-U152 C858JD /CZP/RLQ	356	M5356	E4326	D3216	H3262	P2416-A	—	MT01	UYX128GAS #10	
	364	M5364	E4327	D3217	H3263	P2417-A	MH41	MT01	UYX128GAS #10	
C007JD-W152 C858JD /CZP/CLA/RLQ	356	M5356	E4326	D3216	H3262	P2416-A	—	MT01	UYX128GAS #10	
	364	M5364	E4327	D3217	H3263	P2417-A	—	MT01	UYX128GAS #10	
C007JD-U152 C858JD /CZP/CLA/RLQ	240	M5240	E3544	D4206	H4458	P2544-A	—	MT01A	TVX5 #14~16	
	248	M5248	E3545	D4206	H4458	P2545-A	—	MT01A	TVX5 #14~16	
	356	M5356	E3846	D4206	H4458	P2446-A	MH41	MT01A	TVX5 #14~16	
	364	M5364	E3847	D4207	H4459	P2447-A	—	MT01A	TVX5 #14~16	
C007JD-U162 C858JD	240	M5240	E3544	D4206	H4458	P2544-A	—	MT01A	TVX5 #14~16	
	248	M5248	E3545	D4206	H4458	P2545-A	—	MT01A	TVX5 #14~16	
	356	M5356	E3846	D4206	H4458	P2446-A	MH41	MT01A	TVX5 #14~16	
	364	M5364	E3847	D4207	H4459	P2447-A	—	MT01A	TVX5 #14~16	
C007JD-W162 C858JD /UTP (UTR)	240	M5240	E3544	D4206	H4458	P2544-A	—	MT01A	TVX5 #14~16	
	248	M5248	E3545	D4206	H4458	P2545-A	—	MT01A	TVX5 #14~16	
	356	M5356	E3846	D4206	H4458	P2446-A	MH41	MT01A	TVX5 #14~16	
	364	M5364	E3847	D4207	H4459	P2447-A	—	MT01A	TVX5 #14~16	
C007JD-U162 C858JD /UTQ (UTS)	240	M5240	E3544	D4206	H4458	P2544-A	—	MT01A	TVX5 #14~16	
	248	M5248	E3545	D4206	H4458	P2545-A	—	MT01A	TVX5 #14~16	
	356	M5356	E3846	D4206	H4458	P2446-A	—	MT01A	TVX5 #14~16	
364	M5364	E3847	D4207	H4459	P2447-A	—	MT01A	TVX5 #14~16		

註：P2544-A/P2545-A 為固定式押具舌，亦可使用活動式押具舌 P2565-A 代替 P2544-A/P2545-A
 P2446-A/P2447-A 為固定式押具舌，亦可使用活動式押具舌 P2466-A 代替 P2446-A/P2447-A

筒車直驅伺服馬達規格件表 / CONVERSION CHART

MODEL	SUB-CLASS	NEEDLE CLAMP	NEEDLE PLATE	MAIN FEED DOG	DIFF. FEED DOG	PRESSER FOOT	SPREADER	LOOPER	NEEDLE	Motor
機型	規格	針座	針板	主送具	差送具	押具	上叉	勾針	針號	馬達
C007JD-W222	240	M5240	E4124P	D3216	H3362	P1814-A	MH41	MT01	UYX128GAS #10	馬達
C858JD /CQ	248	M5248	E4125P	D3216	H3362	P1815-A				
C007JD-U222	356	M5356	E4426P	D3216	H3362	P2116-A				
C858JD /CQ	364	M5364	E4427P	D3217	H3363	P2117-A				
C007JD-C858JD /CQA/CLA	256	M5356	E2326Q	D2110	H2220Q	P2906Q-A	MH41	MT01A	TVX5 #14	T501HE
C007JD-C858JD /CC	356 364	M5356 M5364	E2826P E2827P	D2107L D2107L	H3259M H3259M	P2456-A P2457-A	MH41	MT01	UYX128GAS #10	
C007JD-C858JD /CC	356 364	M5356 M5364	E2826P E2827P	D2107L D2107L	H3259M H3259M	P2456-A P2457-A	—	MT01	UYX128GAS #10	
C007JD-C858JD /CC/UTP(UTR)	356 364	M5356 M5364	E2826P E2827P	D2107L D2107L	H3259M H3259M	P2456-A P2457-A	MH41	MT01	UYX128GAS #10	
C007JD-C858JD /CC/UTQ(UTS)	356 364	M5356 M5364	E2826P E2827P	D2107L D2107L	H3259M H3259M	P2456-A P2457-A	—	MT01	UYX128GAS #10	

註(1) : P2544-A/P2545-A 為固定式押具舌,亦可使用活動式押具舌 P2565-A代替 P2544-A/P2545-A
 P2446-A/P2447-A 為固定式押具舌,亦可使用活動式押具舌 P2466-A代替 P2446-A/P2447-A

註(2) : C007JD-W/U322A-364 /CC 時,該針板與送金改用 C007JD-W/U122-356 之針板與送金,加附CHJ-A

筒車直驅伺服馬達規格件表 / CONVERSION CHART

MODEL	SUB-CLASS	NEEDLE CLAMP	NEEDLE PLATE	MAIN FEED DOG	DIFF. FEED DOG	PRESSER FOOT	SPREADER	LOOPER	NEEDLE	Motor
機型	規格	針座	針板	主送具	差送具	押具	上叉	勾針	針號	馬達
C007JD-W322 C858JD /CE	356 364	M5356 M5364	E2626P E2627P	D2107	H3159	P2456-A P2457-A	MH41	MT01	UYX128GAS #10	T501HE
C007JD-U322 C858JD /CE	356 364	M5356 M5364	E2626P E2627P	D2107	H3159	P2456-A P2457-A	—	MT01	UYX128GAS #10	
C007JD-W322 C858JD CE/UTR(UTR)	356 364	M5356 M5364	E2626P E2627P	D2107	H3159	P2456-A P2457-A	MH41	MT01	UYX128GAS #10	
C007JD-U322 C858JD CE/UTq(UTS)	356 364	M5356 M5364	E2626P E2627P	D2107	H3159	P2456-A P2457-A	—	MT01	UYX128GAS #10	

註：P2544-A/P2545-A 為固定式押具舌,亦可使用活動式押具舌 P2565-A 代替P2544-A/P2545-A
 P2446-A/P2447-A 為固定式押具舌,亦可使用活動式押具舌 P2466-A 代替P2446-A/P2447-A-A

筒車直驅伺服馬達規格件表/CONVERSION CHART

MODEL	SUB-CLASS	NEEDLE CLAMP	NEEDLE PLATE	MAIN FEED DOG	DIFF. FEED DOG	PRESSER FOOT	SPREADER	LOOPER	NEEDLE	Motor
機型	規格	針座	針板	主送具	差送具	押具	上叉	勾針	針號	馬達
C007JD-W512 C858JD /FE	240 356 364	M5240 M5356 M5364	E3524R E3826R E3827R	D4206 D4206 D4207	H4458 H4458 H4459	P2914-A P3216-A P3217-A	MH41	MT01	UYX128GAS #10	H T501HE
C007JD-U512 C858JD /FE	240 356 364	M5240 M5356 M5364	E3524R E3826R E3827R	D4206 D4206 D4207	H4458 H4458 H4459	P3414-A P3716-A P3717-A	—	MT01	UYX128GAS #10	
C007JD-W522 C858JD /FE/CR/CL	356 364	M5356 M5364	E6426R E6427R	D3222	H3268	P3816R-A P3817R-A	MH41	MT01	UYX128GAS #10	
C007JD-U522 C858JD /FE/CR/CL	356 364	M5356 M5364	E6426R E6427R	D3222	H3268	P3816R-A P3817R-A	—	MT01	UYX128GAS #10	
C007JD-W532/ C858JD CR/UTP/CL/RLP/CX	356 364	M5356 M5364	E6426R E6427R	D3222	H3268	P3816R-A P3817R-A	MH41	MT01	UYX128GAS #10	
C007JD-U532/ C858JD CR/UTQ/CL/RLP/CX	356 364	M5356 M5364	E6426R E6427R	D3222	H3268	P3816R-A P3817R-A	MH41	MT01	UYX128GAS #10	
C007JD-W922/ C858JD CW	456 464	M5456 M5464	E1828P E1848P	D2107M	H4459M	P2428Q-A P2448Q-A	MH41	MT01B	SMX1014B#10 (MY1014B#70,S,Y7256)	
C007JD-W922/ C858JD CW/UTP	456 464	M5456 M5464	E1828P E1848P	D2107M	H4459M	P2428Q-A P2448Q-A	MH41	MT01B	SMX1014B#10 (MY1014B#70,S,Y7256)	
C007JD-W922/ C858JD CW/UTR	456 464	M5456 M5464	E1828P E1848P	D2107M	H4459M	P2428Q-A P2448Q-A	MH41	MT01B	SMX1014B#10 (MY1014B#70,S,Y7256)	

註：C007JD/C858JD 不可加裝FFC

規格件表 CONVERSION CHART

筒車直驅伺服馬達規格件表/CONVERSION CHART

MODEL	SUB-CLASS	NEEDLE CLAMP	NEEDLE PLATE	MAIN FEED DOG	DIFF FEED DOG	PRESSER FOOT	SPREADER	LOOPER	NEEDLE	Motor
機型	規格	針座	針板	主送具	差送具	押具	上叉	勾針	針號	馬達
C007JD-W811	248	M5248	E0215R	D2101Q	H2203R	P2785-A	MH41	MT01	TX5 #14	馬達 T501HE
C858JD-CRL/RL	356 364	M5356 M5364	E0216R E0217R			P2766-A P2767-A				
C007JD-W811A	248	M5248	E0215Q	D2101Q	H2203Q	P2785-A	MH41	MT01	TX5 #14	
C858JD-CRL/RL	356 364	M5356 M5364	E0216Q E0217Q			P2766-A P2767-A				
C007JD-U811	248	M5248	E0215R	D2101Q	H2203R	P0985-A	—	MT01	TX5 #14	
C858JD-CRL/RL	356 364	M5356 M5364	E0216R E0217R			P0986-A P0987-A				
C007JD-U811A	248	M5248	E0215Q	D2101Q	H2203Q	P0985-A	—	MT01	TX5 #14	
C858JD-CRL/RL	356 364	M5356 M5364	E0216Q E0217Q			P0986-A P0987-A				
C007JD-W811	248	M5248	E0215R	D2101Q	H2203R	P2785-A	MH41	MT01	TX5 #14	
C858JD-CRL/UTP/RL	356 364	M5356 M5364	E0216R E0217R			P2766-A P2767-A				
C007JD-W811A	248	M5248	E0215Q	D2101Q	H2203Q	P2785-A	MH41	MT01	TX5 #14	
C858JD-CRL/UTP/RL	356 364	M5356 M5364	E0216Q E0217Q			P2766-A P2767-A				
C007JD-U811	248	M5248	E0215R	D2101Q	H2203R	P0985-A	—	MT01	TX5 #14	
C858JD-CRL/UTQ/RL	356 364	M5356 M5364	E0216R E0217R			P0986-A P0987-A				
C007JD-W812	248	M5248	E0225R	D2101Q	H2203R	P2785-A	MH41	MT01	UYX128GAS #10	
C858JD-CRL/RL	356 364	M5356 M5364	E0226R E0227R			P2789-A P2787-A				
C007JD-W812A	248	M5248	E0225Q	D2101Q	H2203Q	P2785-A	MH41	MT01	UYX128GAS #10	
C858JD-CRL/RL	356 364	M5356 M5364	E0226Q E0227Q			P2789-A P2787-A				
C007JD-U812	248	M5248	E0225R	D2101Q	H2203R	P0985-A	—	MT01	UYX128GAS #10	
C858JD-CRL/RL	356 364	M5356 M5364	E0226R E0227R			P0986-A P0987-A				
C007JD-U812A	248	M5248	E0225Q	D2101Q	H2203Q	P0985-A	—	MT01	UYX128GAS #10	
C858JD-CRL/RL	356 364	M5356 M5364	E0226Q E0227Q			P0986-A P0987-A				

註：C007JD-W812A/W813A 機型之針板與差送具為5排齒。
 C007JD-W812/W813 機型之針板與差送具為4排齒。
 C858JD

筒車直驅伺服馬達規格件表 / CONVERSION CHART

MODEL	SUB-CLASS	NEEDLE CLAMP	NEEDLE PLATE	MAIN FEED DOG	DIFF. FEED DOG	PRESSER FOOT	SPREADER	LOOPER	NEEDLE	Motor
機型	規格	針座	針板	主送具	差送具	押具	上叉	勾針	針號	馬達
C007JD-W812	248	M5248	E 0225R	D2101Q	H2203R	P2765-A	MH41	MT01	UYX128GAS #10	馬達 T501HE
C858JD-CRL/UTP/RL	356 364	M5356 M5364	E 0226R E 0227R	D2101Q	H2203Q	P2766-A P2767-A	MH41	MT01	UYX128GAS #10	
C007JD-W812A	248	M5248	E 0225Q	D2101Q	H2203Q	P2765-A	—	MT01	UYX128GAS #10	
C858JD-CRL/UTP/RL	356 364	M5356 M5364	E 0226Q E 0227Q	D2101Q	H2203R	P2766-A P2767-A	—	MT01	UYX128GAS #10	
C007JD-U812	248	M5248	E 0225R	D2101Q	H2203Q	P0965-A	—	MT01	UYX128GAS #10	
C858JD-CRL/UTQ/RL	356 364	M5356 M5364	E 0226R E 0227R	D2101Q	H2203Q	P0966-A P0967-A	—	MT01	UYX128GAS #10	
C007JD-U812A	248	M5248	E 0225Q	D2101Q	H2203Q	P0965-A	—	MT01	UYX128GAS #10	
C858JD-CRL/UTQ/RL	356 364	M5356 M5364	E 0226Q E 0227Q	D2101Q	H2203R	P0966-A P0967-A	—	MT01	UYX128GAS #10	
C007JD-W812	248	M5248	E 0225R	D2101Q	H2203Q	P2765-A	MH41	MT01	UYX128GAS #10	
C858JD-CRL/UTR	356 364	M5356 M5364	E 0226R E 0227R	D2101Q	H2203Q	P2766-A P2767-A	MH41	MT01	UYX128GAS #10	
C007JD-W812A	248	M5248	E 0225Q	D2101Q	H2203Q	P2765-A	MH41	MT01	UYX128GAS #10	
C858JD-CRL/UTR	356 364	M5356 M5364	E 0226Q E 0227Q	D2101Q	H2203Q	P2766-A P2767-A	MH41	MT01	UYX128GAS #10	
C007JD-U812	248	M5248	E 0225R	D2101Q	H2203R	P0965-A	MH41	MT01	UYX128GAS #10	
C858JD-CRL/UTS	356 364	M5356 M5364	E 0226R E 0227R	D2101Q	H2203Q	P0966-A P0967-A	MH41	MT01	UYX128GAS #10	
C007JD-U812A	248	M5248	E 0225Q	D2101Q	H2203Q	P0965-A	MH41	MT01	UYX128GAS #10	
C858JD-CRL/UTS	356 364	M5356 M5364	E 0226Q E 0227Q	D2101Q	H2203R	P0966-A P0967-A	MH41	MT01	UYX128GAS #10	
C007JD-W813	248	M5248	E 0235R	D2101Q	H2203R	P2765-A	MH41	MT01	UYX128GAS #10	
C858JD-CRL/RL	356 364	M5356 M5364	E 0236R E 0237R	D2101Q	H2203Q	P2766-A P2767-A	MH41	MT01	UYX128GAS #10	
C007JD-W813A	248	M5248	E 0235Q	D2101Q	H2203Q	P2765-A	MH41	MT01	UYX128GAS #10	
C858JD-CRL/RL	356 364	M5356 M5364	E 0236Q E 0237Q	D2101Q	H2203R	P2766-A P2767-A	MH41	MT01	UYX128GAS #10	
C007JD-U813	248	M5248	E 0235R	D2101Q	H2203R	P0965-A	—	MT01	UYX128GAS #10	
C858JD-CRL/RL	356 364	M5356 M5364	E 0236R E 0237R	D2101Q	H2203Q	P0966-A P0967-A	—	MT01	UYX128GAS #10	
C007JD-U813A	248	M5248	E 0235Q	D2101Q	H2203Q	P0965-A	—	MT01	UYX128GAS #10	
C858JD-CRL/RL	356 364	M5356 M5364	E 0236Q E 0237Q	D2101Q	H2203R	P0966-A P0967-A	—	MT01	UYX128GAS #10	

註：C007JD-W812A/W813A 機型之針板與差送具為 5 排齒。
 C858JD 機型之針板與差送具為 4 排齒。
 C007JD-W812/W813 機型之針板與差送具為 4 排齒。
 C858JD

規格件表 CONVERSION CHART

筒車直驅伺服馬達規格件表 / CONVERSION CHART

MODEL	SUB-CLASS	NEEDLE CLAMP	NEEDLE PLATE	MAIN FEED DOG	DIFF. FEED DOG	PRESSER FOOT	SPREADER	LOOPER	NEEDLE	Motor
機型	規格	針座	針板	主送具	差送具	押具	上叉	勾針	針號	馬達
C007JD -W813	248	M5248	E0235R	D2101Q	H2203R	P2765-A	MH41	MT01	TX5 #14	H T501HE
C858JD /CRL/UTR	356	M5356	E0236R	D2101Q	H2203R	P2766-A	MH41	MT01	TX5 #14	
C007JD -W813A	248	M5248	E0235Q	D2101Q	H2203Q	P2765-A	MH41	MT01	TX5 #14	
C858JD /CRL/UTR	356	M5356	E0236Q	D2101Q	H2203Q	P2766-A	MH41	MT01	TX5 #14	
C007JD -W813A	248	M5248	E0235R	D2101Q	H2203R	P0965-A	MH41	MT01	TX5 #14	
C858JD /CRL/UTS	356	M5356	E0236R	D2101Q	H2203R	P0966-A	MH41	MT01	TX5 #14	
C007JD -W813A	248	M5248	E0235Q	D2101Q	H2203Q	P0965-A	MH41	MT01	TX5 #14	
C858JD /CRL/UTS	356	M5356	E0236Q	D2101Q	H2203Q	P0966-A	MH41	MT01	TX5 #14	
C007JD -W822	248	M5248	E0225R	D2101Q	H2203R	P2765-A	MH41	MT01	UYX128GAS #10	
C858JD /CRL/CY/CL/RL	356	M5356	E0226R	D2101Q	H2203R	P2766-A	MH41	MT01	UYX128GAS #10	
C007JD -W823	248	M5248	E0227R	D2101Q	H2203R	P2765-A	MH41	MT01	UYX128GAS #10	
C858JD /CRL/CY/CL/RL	356	M5356	E0228R	D2101Q	H2203R	P2766-A	MH41	MT01	UYX128GAS #10	
C007JD -W822	248	M5248	E0225R	D2101Q	H2203R	P0965-A	—	MT01	UYX128GAS #10	
C858JD /CRL/CY/UTP/CL/RL	356	M5356	E0226R	D2101Q	H2203R	P0966-A	—	MT01	UYX128GAS #10	
C007JD -W823	248	M5248	E0227R	D2101Q	H2203R	P0965-A	—	MT01	UYX128GAS #10	
C858JD /CRL/CY/UTP/CL/RL	356	M5356	E0228R	D2101Q	H2203R	P0966-A	MH41	MT01	UYX128GAS #10	
C007JD -W823	248	M5248	E0235R	D2101Q	H2203R	P2765-A	MH41	MT01	TX5 #14	
C858JD /CRL/CY/UTP/CL/RL	356	M5356	E0236R	D2101Q	H2203R	P2766-A	MH41	MT01	TX5 #14	

註：C007JD -W812A/W813A 機型之針板與差送具為 5 排齒。
 C007JD -W812/W813 機型之針板與差送具為 4 排齒。
 C858JD -W812/W813 機型之針板與差送具為 4 排齒。

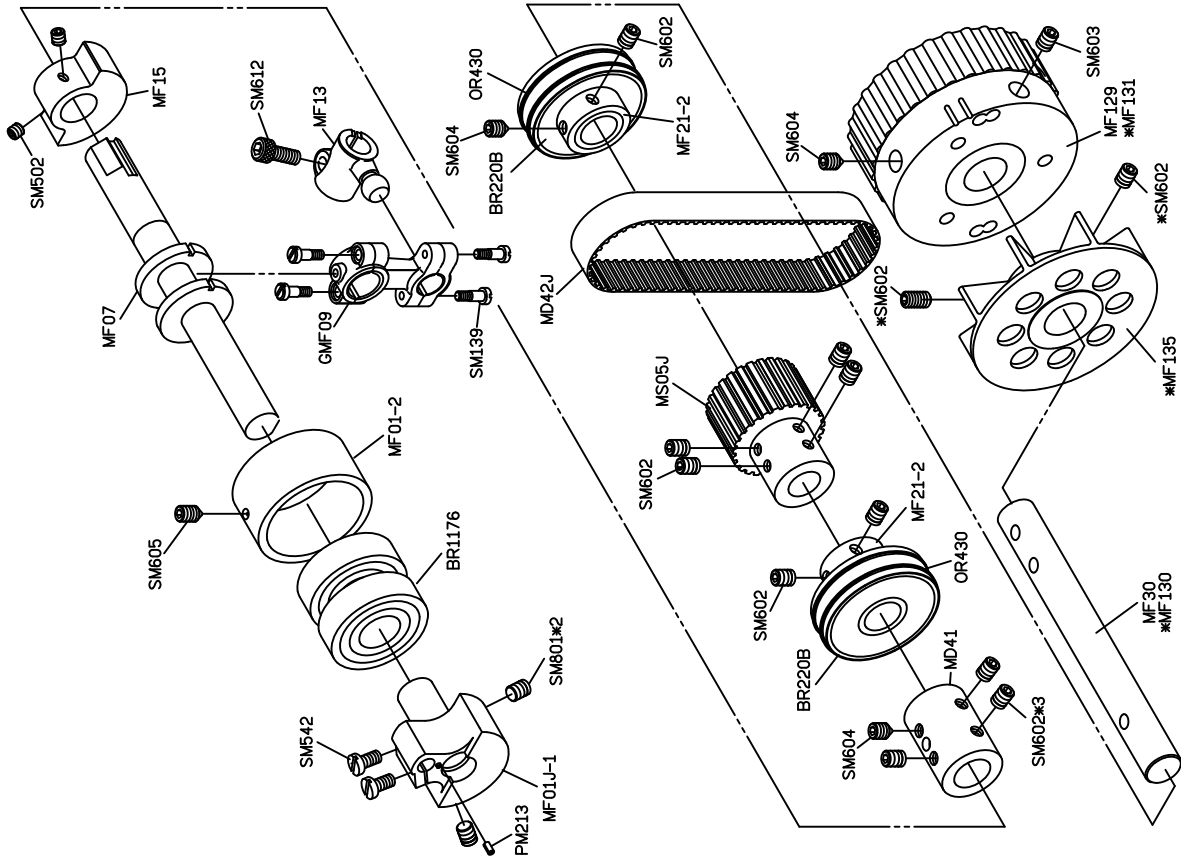
筒車直驅伺服馬達規格件表 / CONVERSION CHART

MODEL	機型	SUB-CLASS	規格	針座	針板	主送具	差送具	押具	SPREADER	LOOPER	NEEDLE	馬達
C007JD-U822		248	E0225R	M5248	E0225R	D2101Q	H2203R	P0965-A	—	MT01	UYX128GAS #10	馬達 T501HE
C858JD		356	E0226R	M5356	E0226R	D2101Q	H2203R	P0966-A	—	MT01	UYX128GAS #10	
CRL/CY/UTQ/CL/RL		364	E0227R	M5364	E0227R	D2101Q	H2203R	P0967-A	—	MT01	UYX128GAS #10	
C007JD-U823		248	E0235R	M5248	E0235R	D2101Q	H2203R	P0965-A	—	MT01	TVX5 #14	
C858JD		356	E0236R	M5356	E0236R	D2101Q	H2203R	P0966-A	—	MT01	UYX128GAS #10	
CRL/CY/UTQ/CL/RL		364	E0237R	M5364	E0237R	D2101Q	H2203R	P0967-A	—	MT01	UYX128GAS #10	
C007JD-U822		248	E0225R	M5248	E0225R	D2101Q	H2203R	P0965-A	—	MT01	UYX128GAS #10	
C858JD		356	E0226R	M5356	E0226R	D2101Q	H2203R	P0966-A	—	MT01	UYX128GAS #10	
CRL/CY/UTQ/CL/RL		364	E0227R	M5364	E0227R	D2101Q	H2203R	P0967-A	—	MT01	UYX128GAS #10	
C007JD-U823		248	E0235R	M5248	E0235R	D2101Q	H2203R	P0965-A	—	MT01	TVX5 #14	
C858JD		356	E0236R	M5356	E0236R	D2101Q	H2203R	P0966-A	—	MT01	TVX5 #14	
CRL/CY/UTQ/CL/RL		364	E0237R	M5364	E0237R	D2101Q	H2203R	P0967-A	—	MT01	TVX5 #14	

筒車直驅伺服馬達規格件表 / CONVERSION CHART

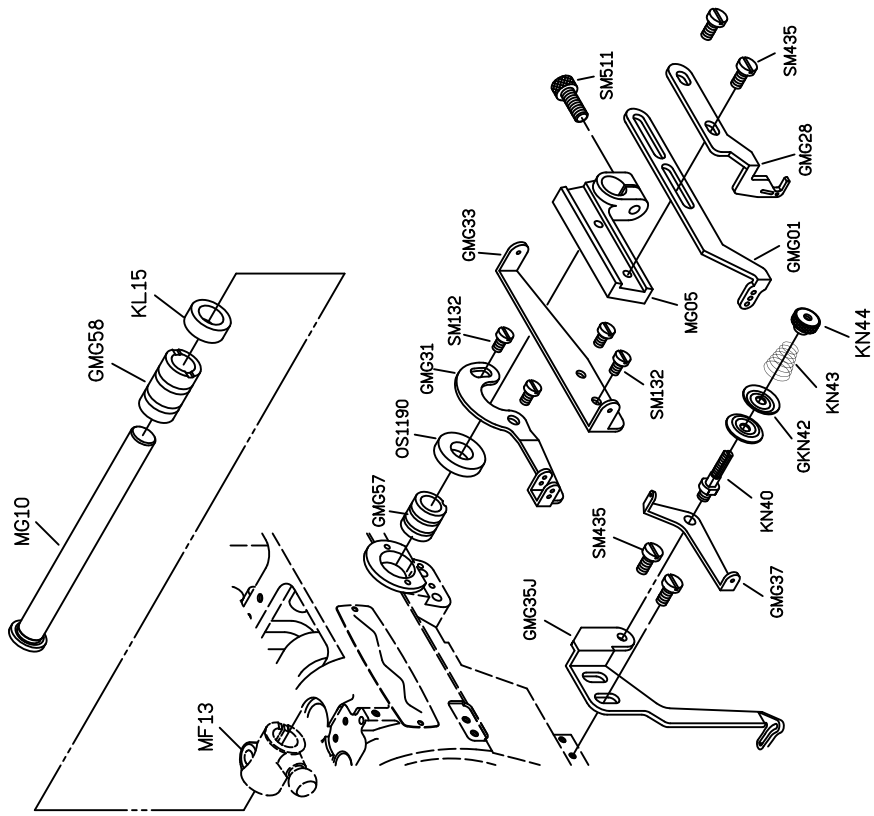
GAGE15

MODEL	SUB-CLASS	NEEDLE CLAMP	NEEDLE PLATE	MAIN FEED DOG	DIFF. FEED DOG	PRESSER FOOT	SPREADER	LOOPER	CAM	NEEDLE
機型	規格	針座	針板	主送具	差送具	押具	上叉	勾針	偏心凸輪	針號
C007JD -W522	356	M5356	E 6426P	D 3222	H 3268	P3116	MH41E	MT01	MF01-A	UYX128GAS #11
C858JD /FE(FC)/CRB/CL	364	M5364	E6427P			P3117				
C007JD -U522	356	M5356	E 6426P	D 3222	H 3268	P3116	—	MT01	MF01-A	UYX128GAS #11
C858JD /FE(FC)/CRB/CL	364	M5364	E6427P			P3117				
C007JD -W812	248	M5248	E 0225R	D2101Q	H2203R	P2765	MH41E	MT01	MF91-A	UYX128GAS #11
C858JD /CRL/RL	356	M5356	E 0226R			P2789				
C007JD -U812	356	M5356	E 0227R	D2101Q	H2203R	P2767	—	MT01	MF91-A	UYX128GAS #11
C858JD /CRL/RL	364	M5364	E 0227R			P0965				
C007JD -W813	248	M5248	E 0235R	D2101Q	H2203R	P2765	MH41E	MT01	MF91-A	UYX128GAS #11
C858JD /CRL/RL	356	M5356	E 0236R			P2766				
C007JD -U813	248	M5248	E 0237R	D2101Q	H2203R	P2767	—	MT01	MF91-A	UYX128GAS #11
C858JD /CRL/RL	356	M5356	E 0236R			P0965				
	364	M5364	E 0237R			P0966				
						P0967				



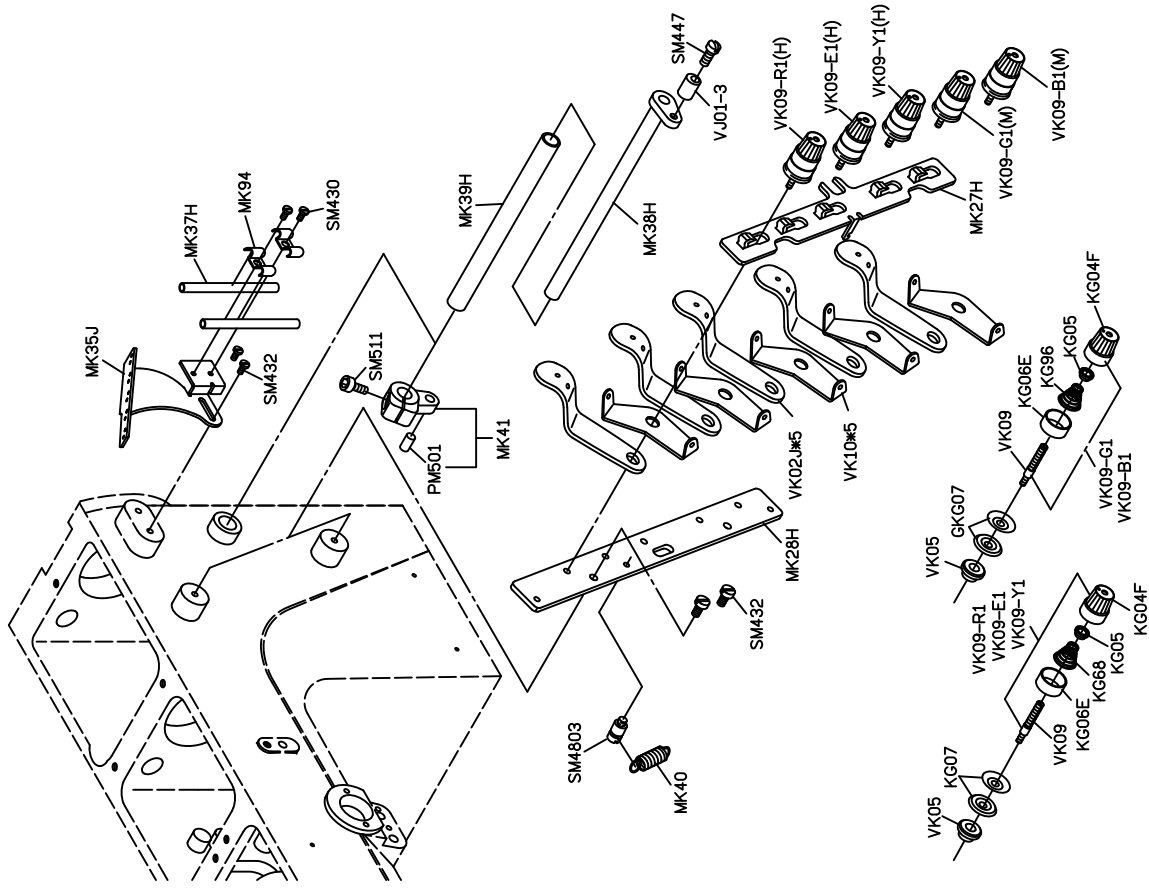
FOR C007J/C007JD/S007K/S007KD/C858J/C858JD
 * USE FOR C007JD/S007KD/C858JD

PARTS LIST FOR MF GROUP



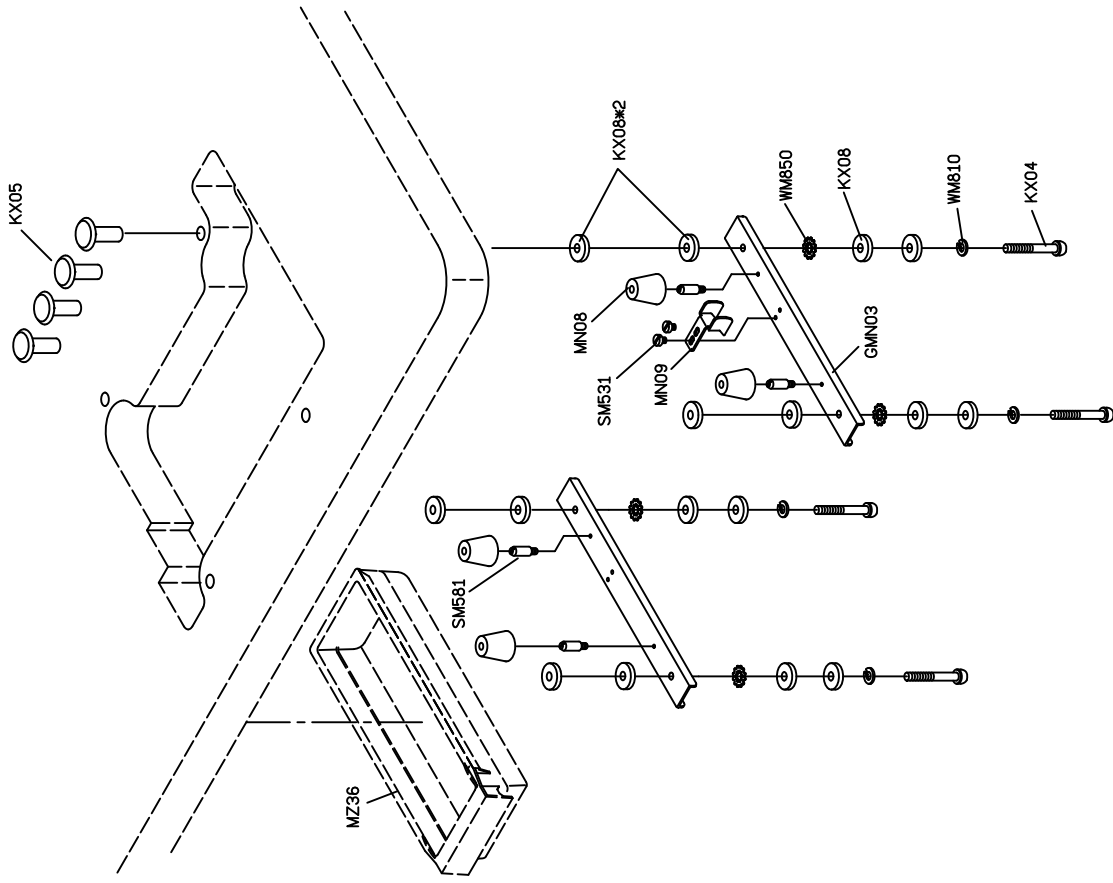
FOR C007J/C007JD/S007K/S007KD/C858J/C858JD

PARTS LIST FOR MG GROUP



FOR C007J/C007J.D/F007J/F007K/KD/C858J/C858J.D/F585J/F858J.D

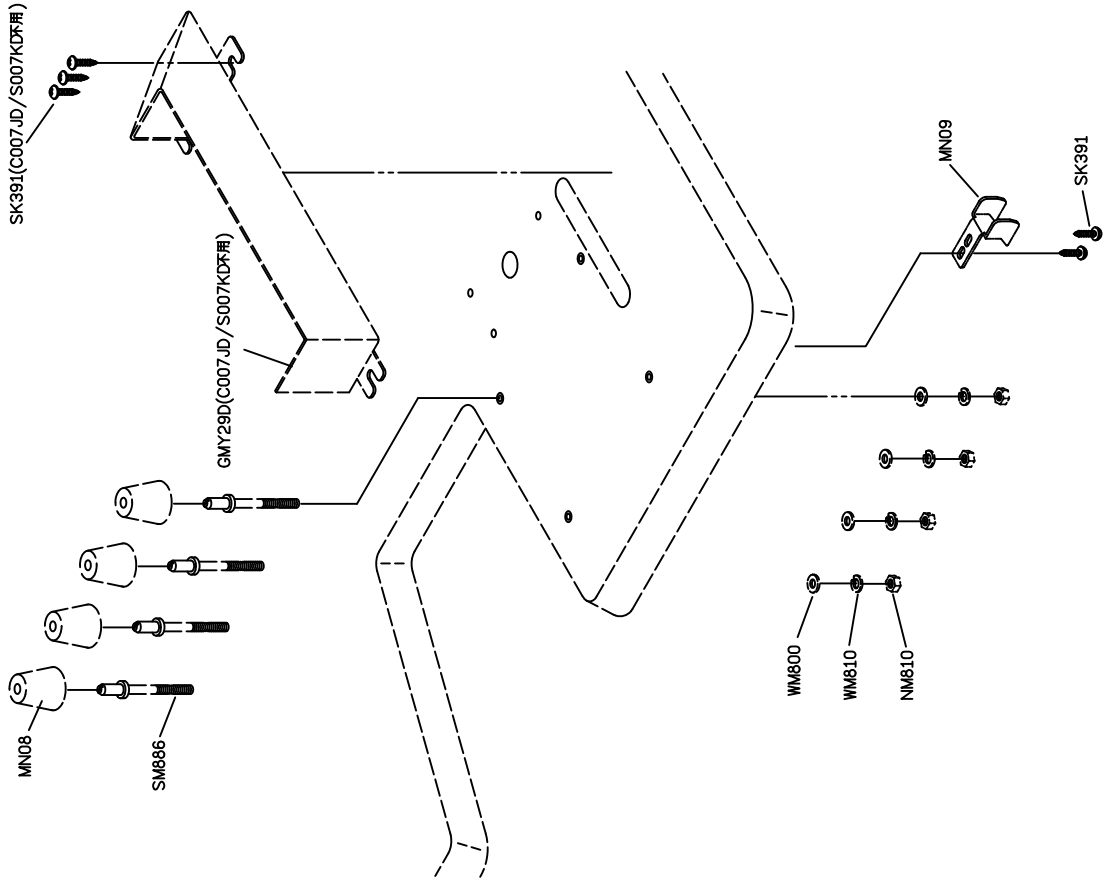
PARTS LIST FOR MK GROUP



FOR C007J/C007J.D/S007K/S007KD/C858J/C858J.D

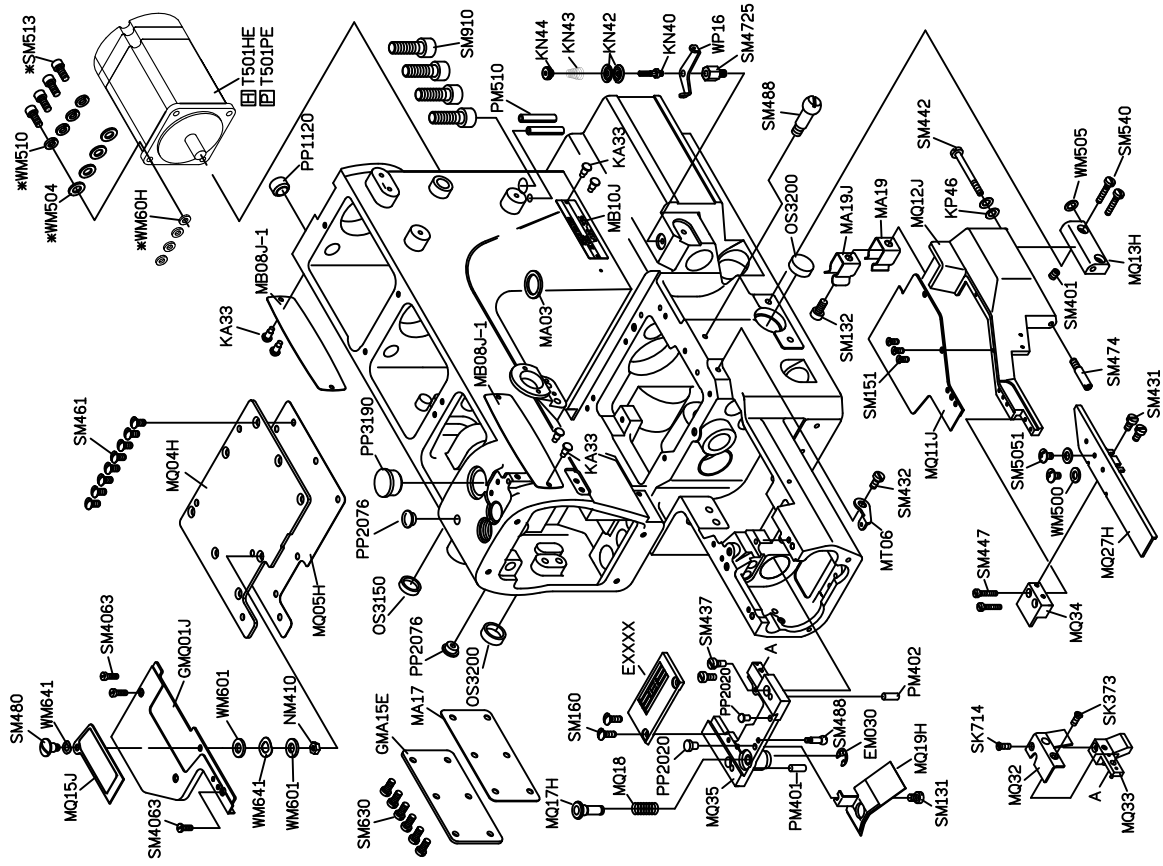
PARTS LIST FOR MN GROUP

PARTS LIST FOR MN GROUP



FOR C007J/C007JD/S007K/S007KD/C858J/858JD

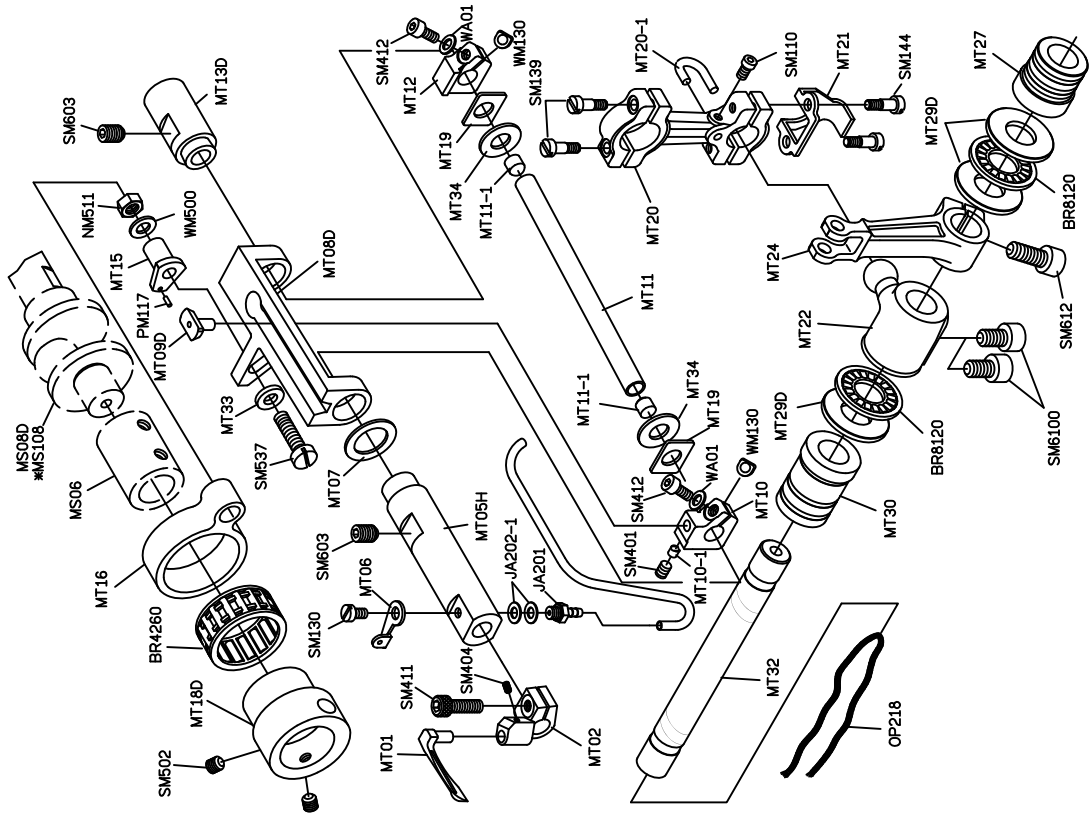
PARTS LIST FOR MQ GROUP



FOR C007J/C007JD/C858J/C858JD
* USE FOR C007JD/C858JD

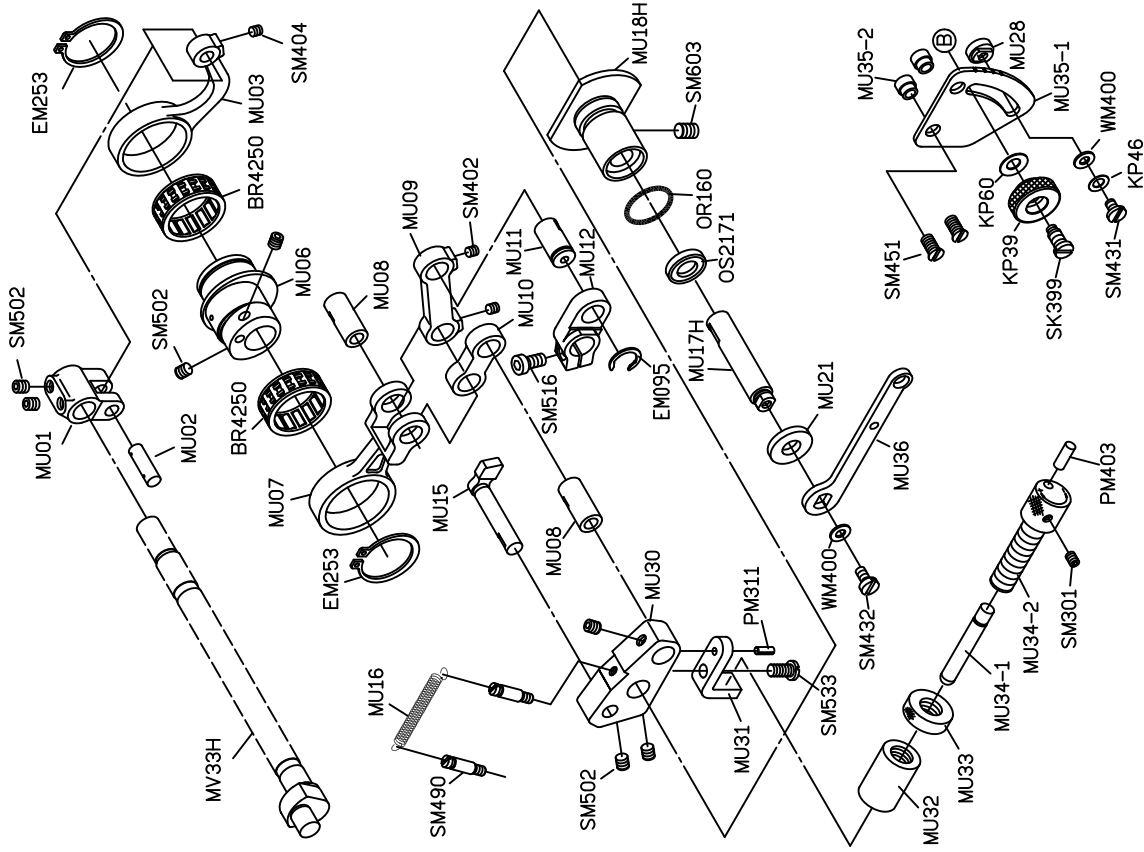
☐ FOR C007JD/C858JD H機種
☐ FOR C007JD/C858JD P機種

PARTS LIST FOR MT GROUP

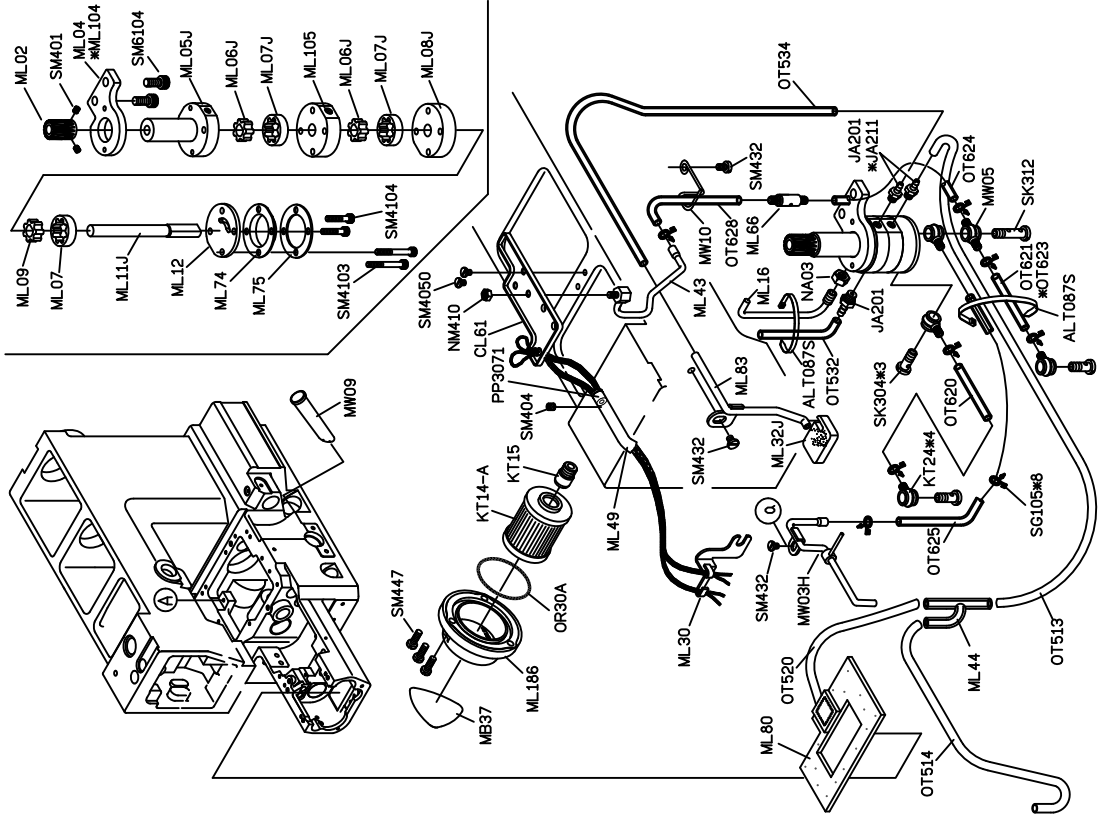


FOR C007J/C007JD/C858J/C858JD
 *USE FOR C007JD/C858JD

PARTS LIST FOR MU GROUP

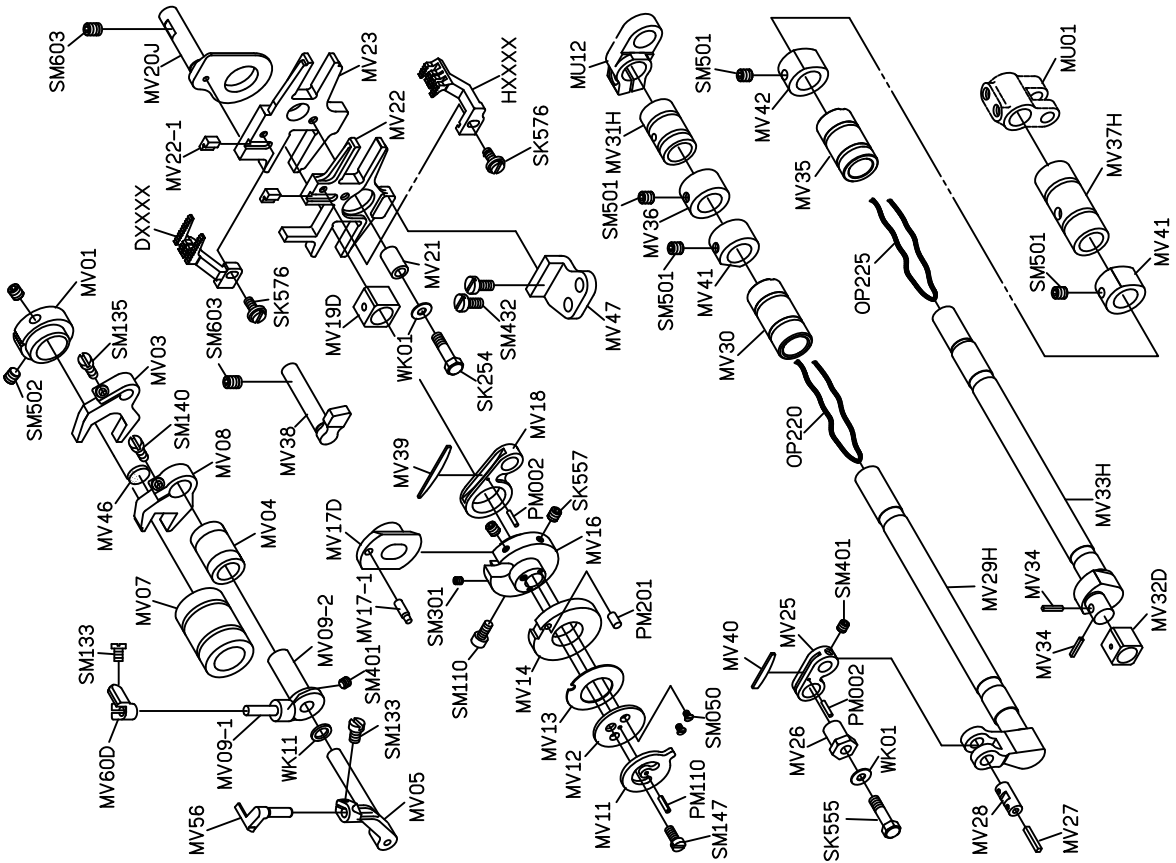


FOR C007J/C007JD/C858J/C858JD



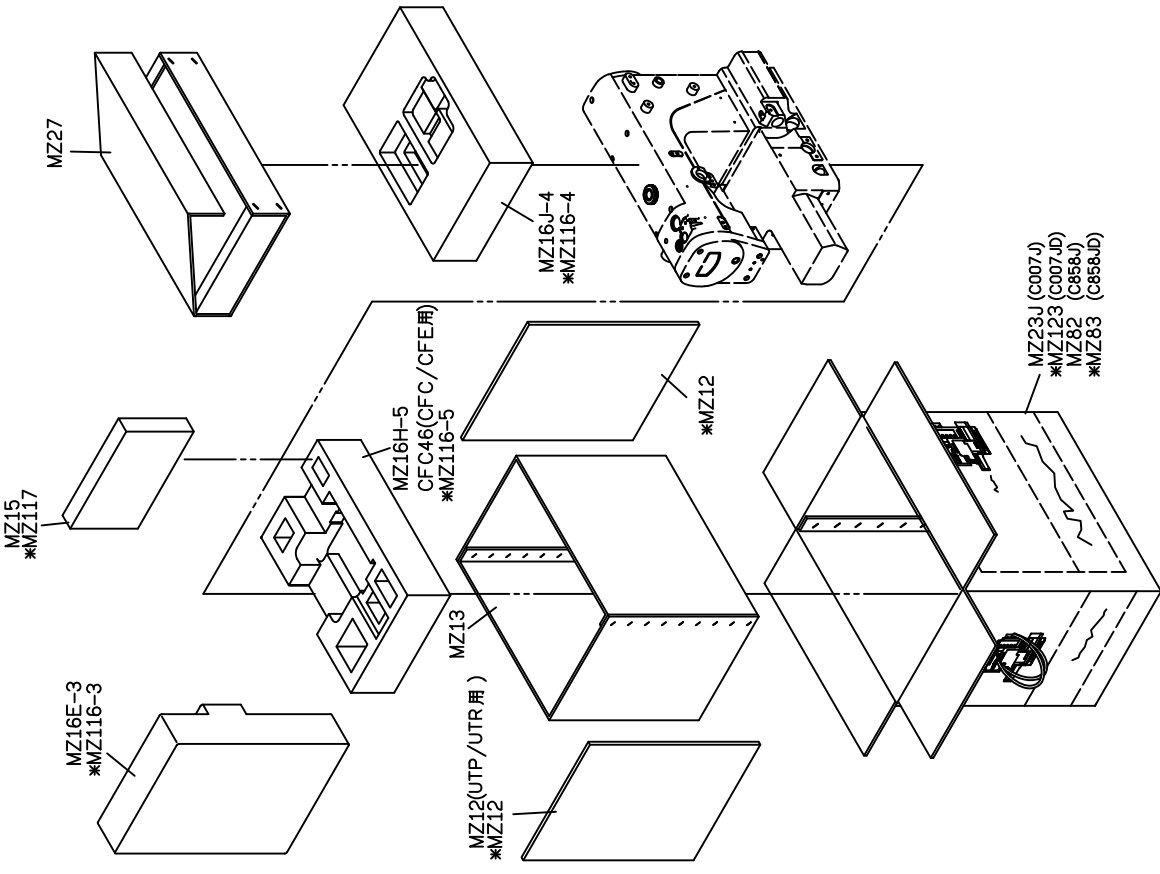
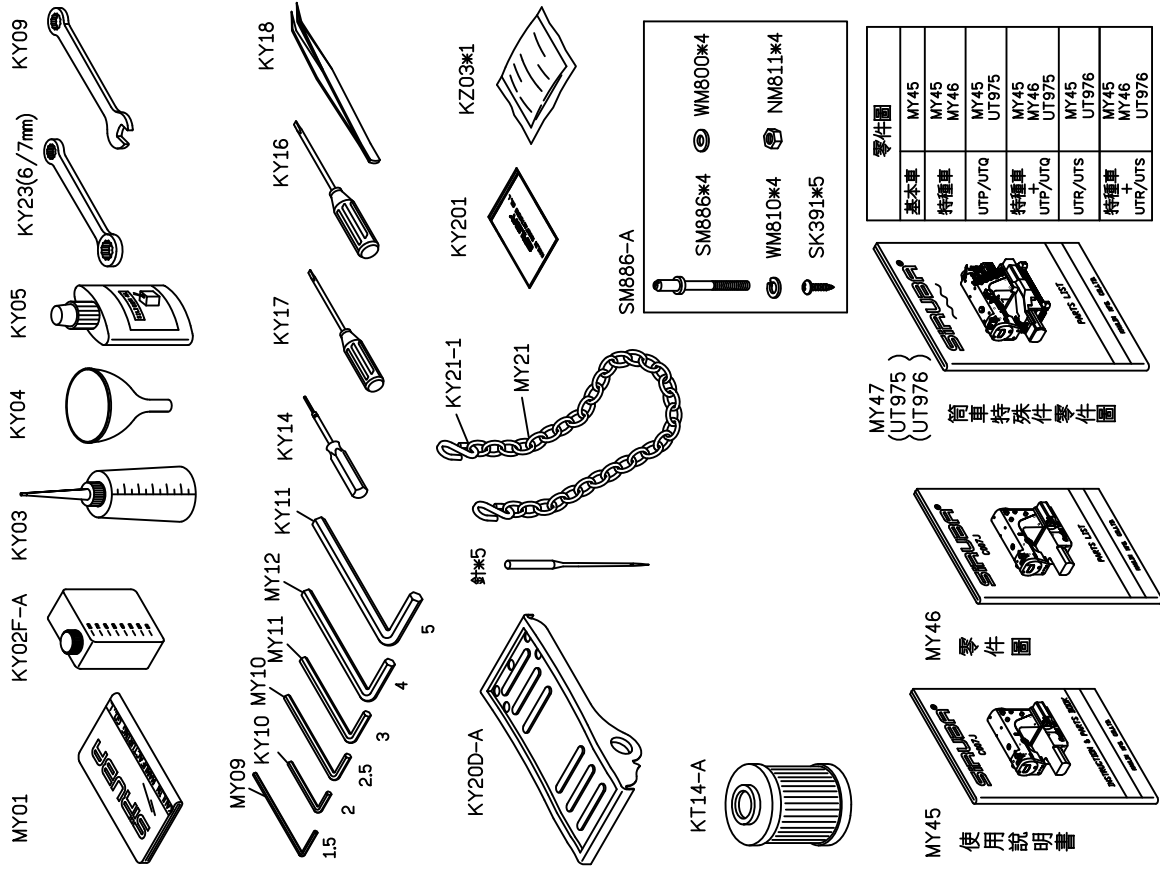
FOR C007J/C007JD/C858J/C858JD
 *USE FOR C007JD/C858JD

PARTS LIST FOR MW GROUP

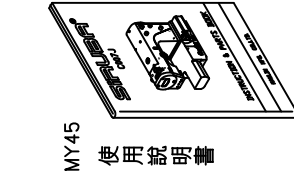
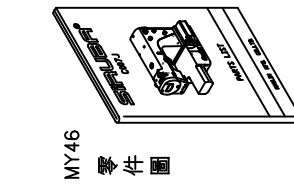
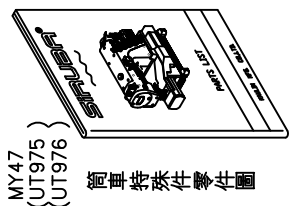


FOR C007J/C007JD/C858J/C858JD

PARTS LIST FOR MV GROUP



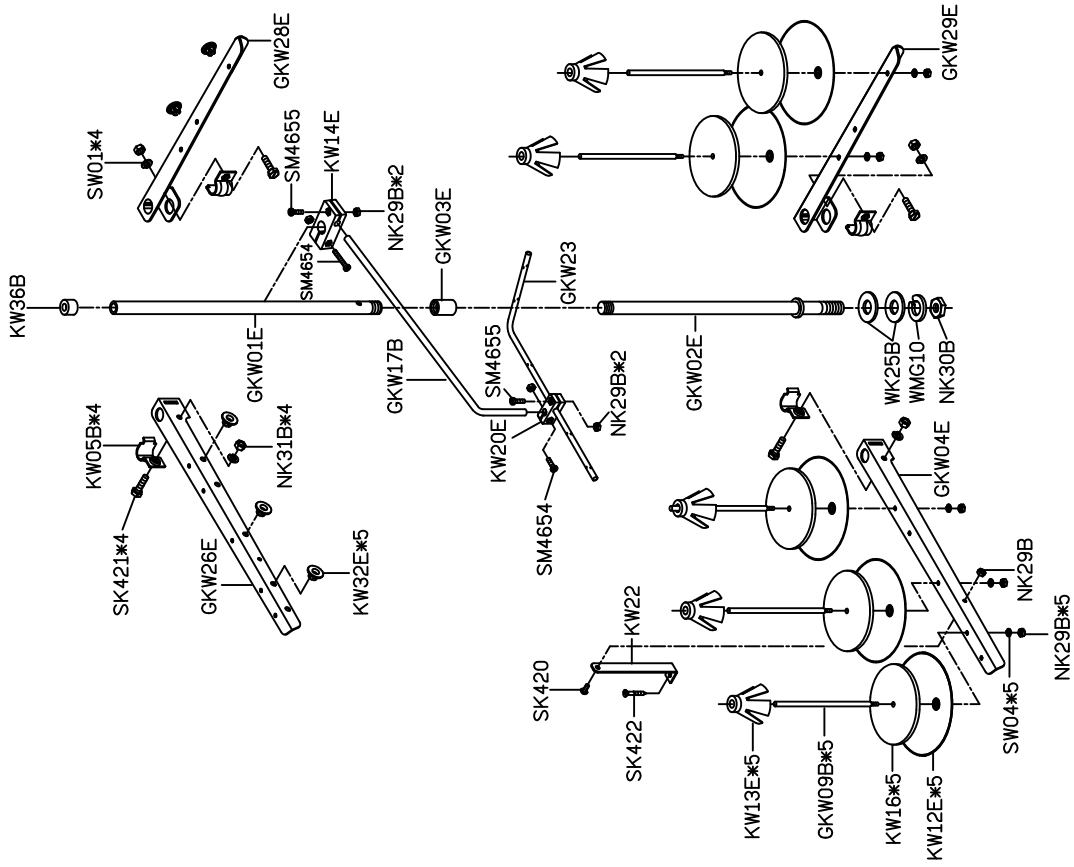
零件圖	
基本草	MY45
特種草	MY46
UTP/UTQ	MY45 UT975
特種草 + UTP/UTQ	MY45 UT975
UTR/UTS	MY45 UT976
特種草 + UTR/UTS	MY45 UT976



FOR C007J/C858J
*USE FOR C007JD/C858JD

USE FOR C007E/C007H/C858E/C858H ONLY

FOR C007J/C007JD/C858J/C858JD
*USE FOR C007JD/C858JD
*USE FOR C007J/C858J ONLY





C007J/C007JD
C858J/C858JD

高林股份有限公司 KAULIN MFG. CO., LTD.